



**RS200 West Country Boat Repairs SW Ugly Tour: Sat 13<sup>th</sup> April**  
**RS400 Sailing Chandlery Southern Tour: Sat 13<sup>th</sup> - Sun 14<sup>th</sup> April**  
**RS500 Rooster National Tour: Sun 14<sup>th</sup> April**  
**Bristol Corinthian Yacht Club**

**SUPPLEMENTARY SAILING INSTRUCTIONS**

**5 SIGNALS MADE ASHORE**

- 5.1 Signals made ashore will be displayed at the main flagpole on the race box at the front of the clubhouse
- 5.2 When flag AP is displayed ashore, '1 minute' is replaced with 'not less than 30 minutes' in Race Signals AP. This changes race signals AP.

**7 CLASS FLAGS**

- RS200 Class Flag or if not available Numeral Pennant 2
- RS400 Class Flag or if not available Numeral Pennant 4
- RS500 Class Flag, or If not available Numeral Pennant 5

**9 COURSES**

- 9.1 Course to be sailed will be Windward Leeward. The diagram in Addendum A shows the course, the order in which marks are to be passed and the side on which each mark is to be passed.

**10 MARKS**

Marks 1, 1A, 4S and 4P will be 1.5m orange pillar buoys. The start mark will be 1m orange dumpy buoy, the finish mark will be 1m orange dumpy buoy.

**12 THE START**

12.2 A boat that does not start within 4 minutes after her starting signal will be scored Did Not Start without a hearing. This changes RRS A5.1 and A5.2 and RS Class Association General Sailing Instructions 12.2.

## **16 TIME LIMITS**

16.1 The time limit for all fleets is 50 minutes. This changes RS Class Association General Sailing Instructions 16.1.

## **17 HEARING REQUESTS**

17.4 Hearings will be held in the protest room which will be the training room inside the clubhouse.

## **18 SCORING**

As per NoR 14. This changes RS Class Association General Sailing Instructions 18.

## **23 OFFICIAL VESSELS**

Official vessels will be the BCYC committee boat BCYC mark laying and support ribs.

## **32 RACE COMMITTEE**

The Race Committee will be Bob Wainwright (Race Officer), Sally Campbell (Class Association Rep) and Simon Page (Deputy Race Officer and Rear Commodore).

## **CLUB SPECIFIC REQUIREMENTS**

**Access is through a gate which needs to be left closed but unlocked.**

**There is a 10 mph speed limit on the crest of the reservoir and in the car park.**

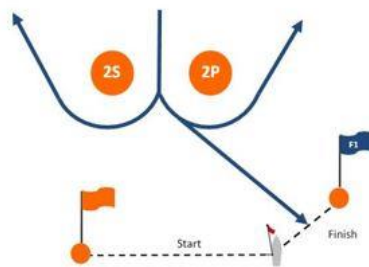
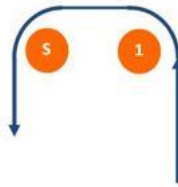
**Please do not park beyond the club house.**

**Invasive species controls are in place. All visiting dinghies must be thoroughly washed down inside and out before launching.**

**Please keep clear of racing boats if you are not racing (particularly at the finish) and of other reservoir users engaged in other activities.**

# ADDENDUM A – Courses

## THE COURSE



RS200 and RS500	
COURSE	Mark Rounding Order
1	Start, 1, S, 2P then Finish between Committee Boat & F1
2	Start, 1, S, 2S & 2P, 1, S, 2P then Finish between Committee Boat & F1
3	Start, 1, S, 2S & 2P, 1, S, 2S & 2P, 1, S, 2P then Finish between Committee Boat & F1
4	Start, 1, S, 2S & 2P, 1, S, 2S & 2P, 1, S, 2S & 2P, 1, S, 2P then Finish between Committee Boat & F1